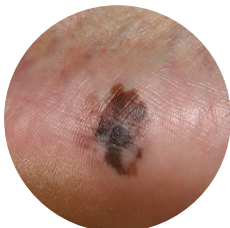
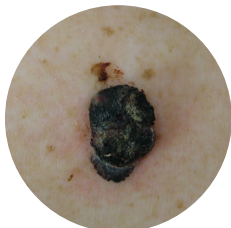
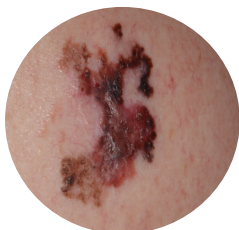




Ko te tohu tuatahi o te matepukupuku kiri, ko te panoni o te rahi o te matepukupuku, te āhua, me te tae o tētahi ira, tētahi kōpatapata, tētahi kōiraira hou rānei kua puta.

**Ki te kiteatia moatatia, ka āhei te whakamaimoa pai mai.**



*Photos DermNetNZ*

Kitea ai ngā matepukupuku kiri ki runga i tō tinana ahakoa ki hea, me te nui o ngā rerekētanga e kitea ana.

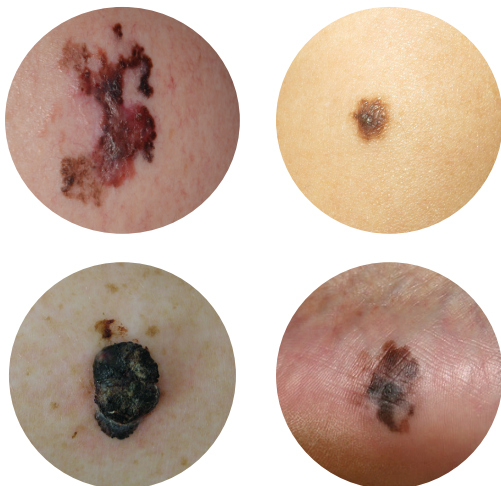
**Me mōhio koe ki tō kiri kia kitea ai ngā rerekētanga tērā pea ka puta.**

**Mehemea he āwangawanga ōu,  
me kōrero ki tō rata**



The first sign of skin cancer is often the change in size, shape or colour of a mole or freckle, or a new spot appearing.

**If detected early, most skin cancer can be successfully treated.**



*Photos DermNetNZ*

**Skin cancers can be found anywhere on your body and have many variations.**

**Get to know your skin so you notice any changes.**

**Any change should be immediately checked by a GP or specialist**